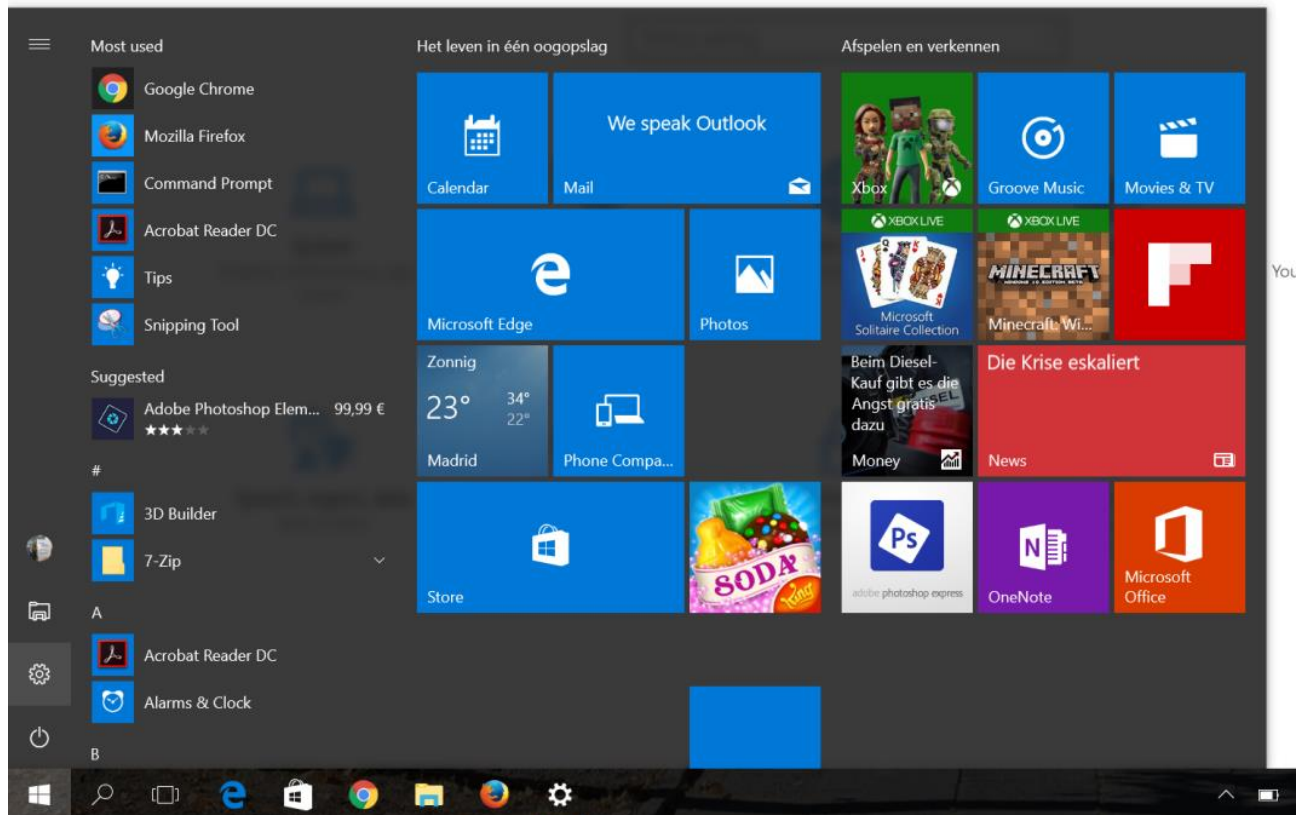
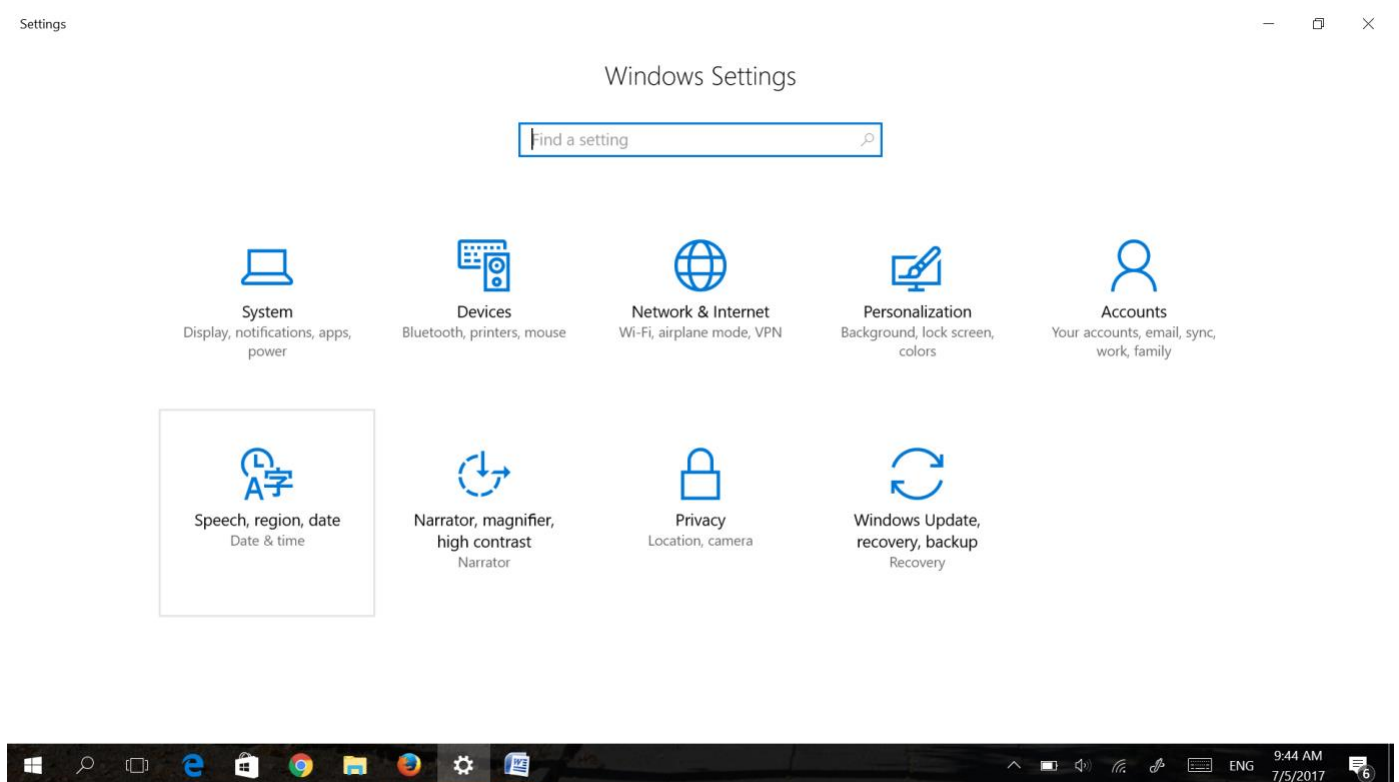




Healthy edge lite software installation

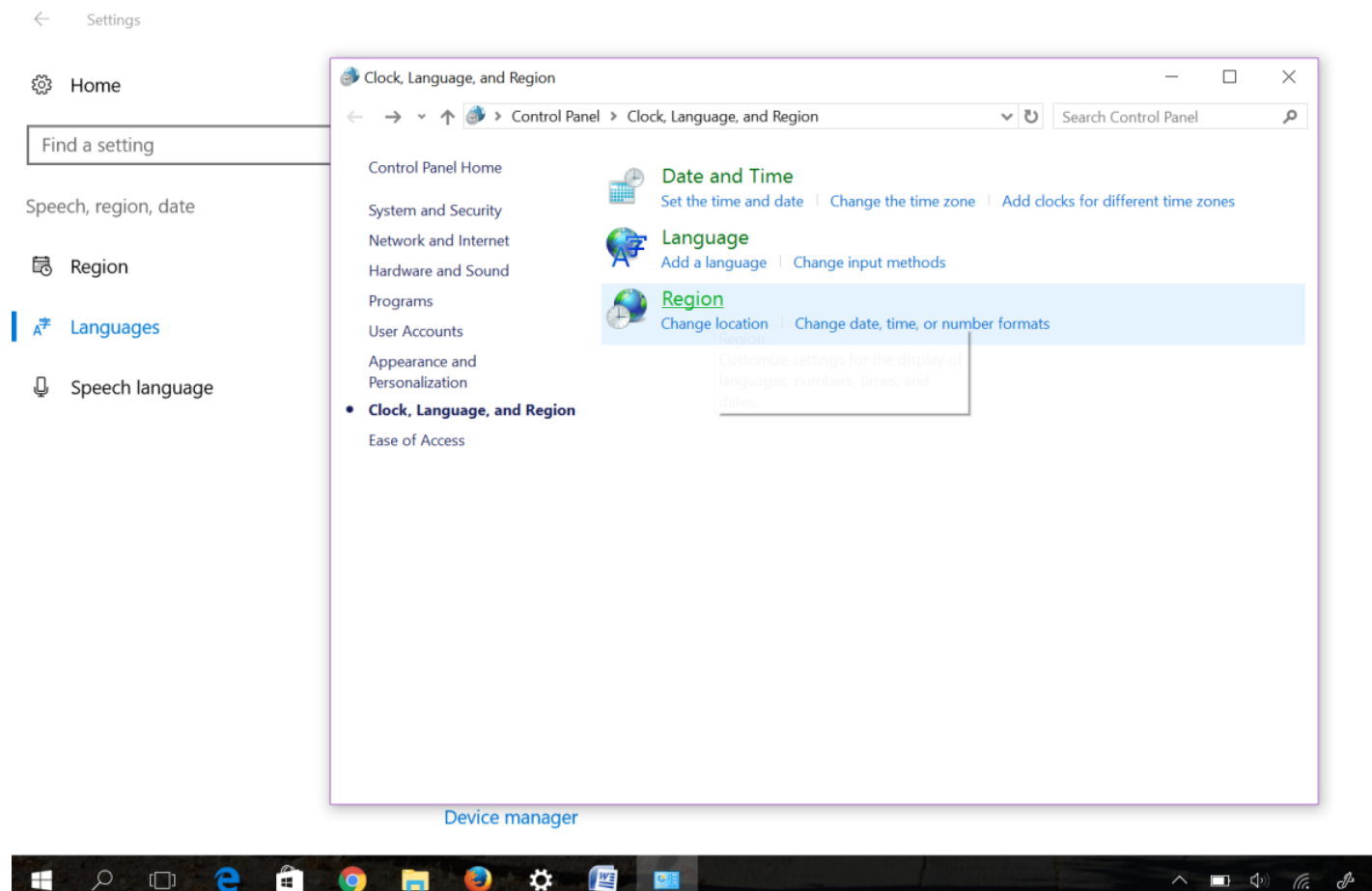
1. Select the **Start** button , then select **Settings** 



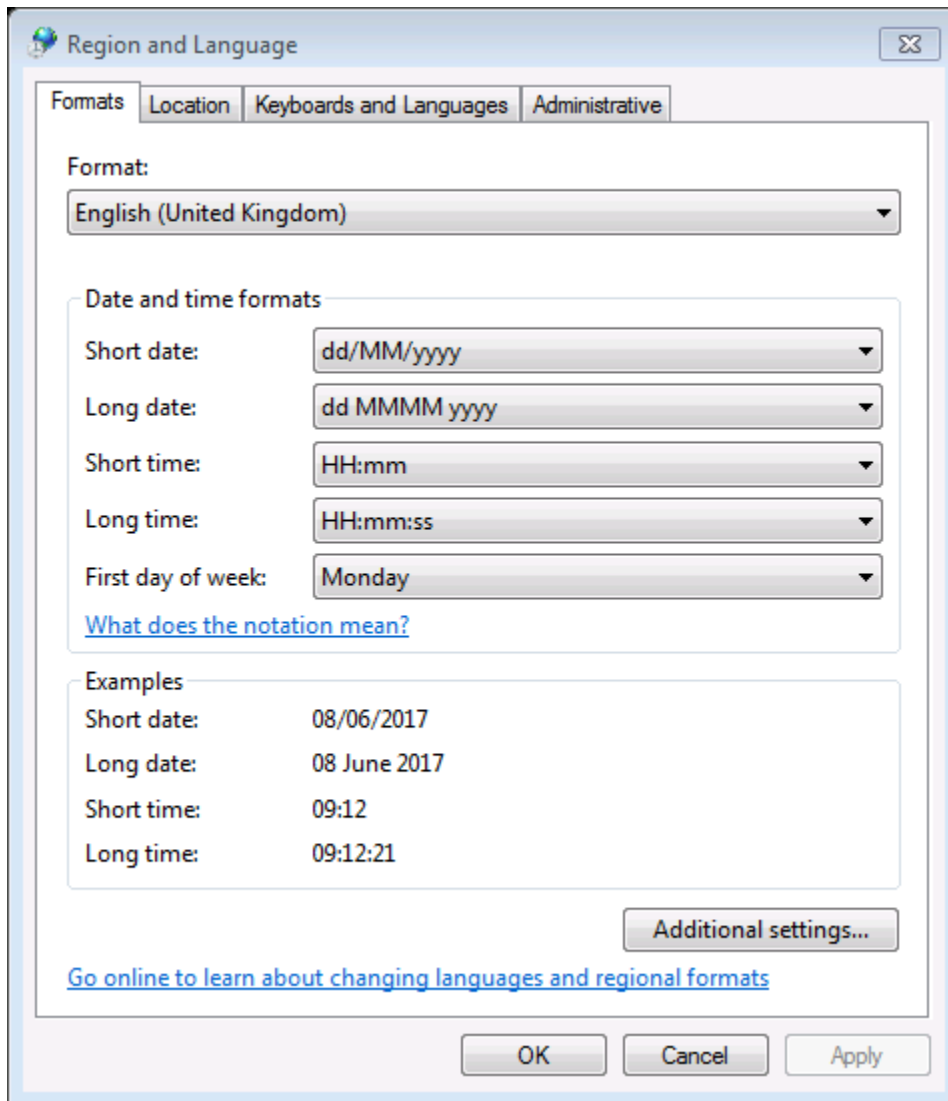
2. Click **Speech, Region, date** (date&time)



3-. Please select **Languages**  and then select **Clock language and Region** / **REGION** 



4. Click the Location tab, select your location from the list, additional settings and then click OK.



4. Click the Location tab, select your location from the list, **additional settings** and then click OK.

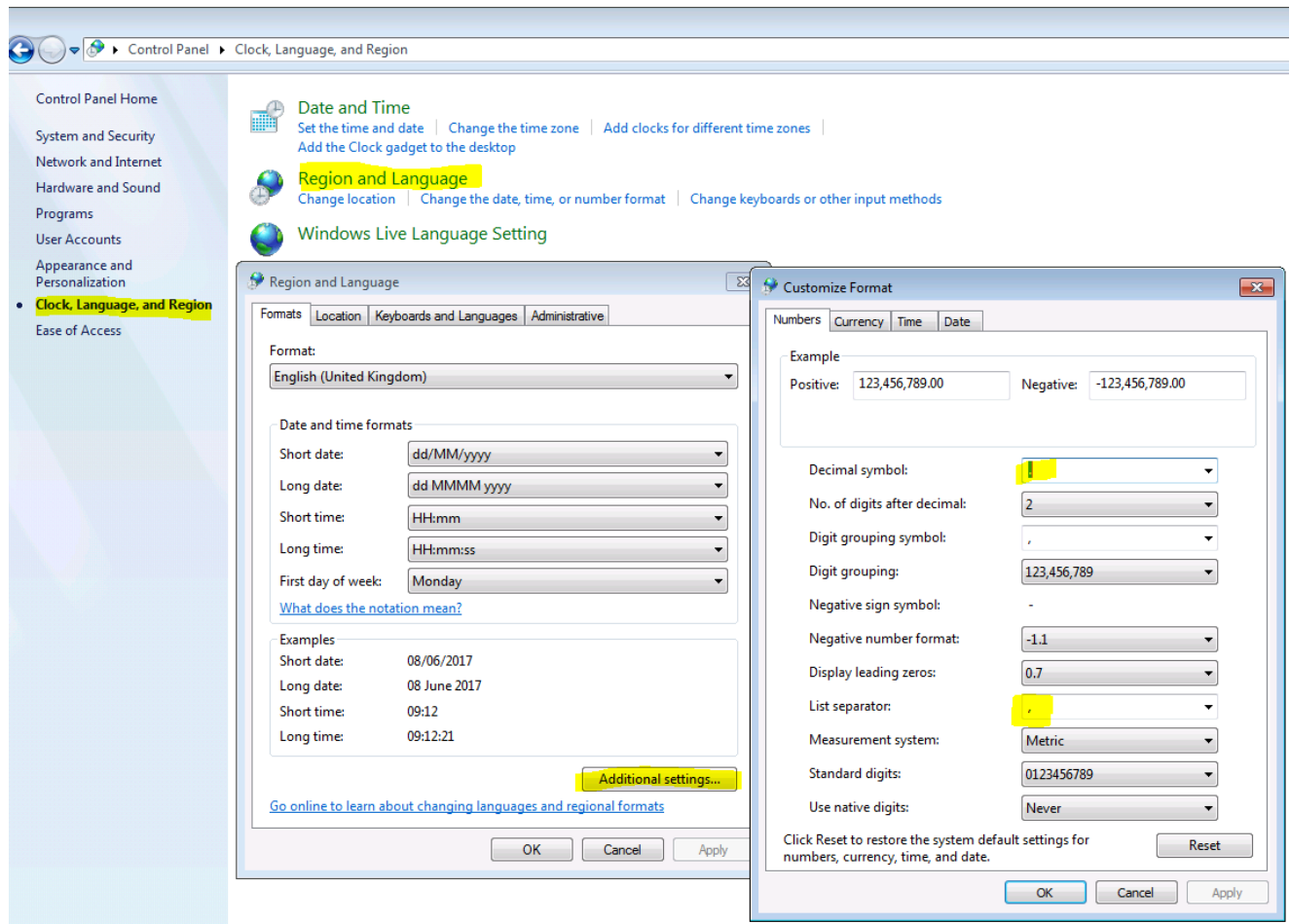
The screenshot shows the 'Customize Format' dialog box with the 'Numbers' tab selected. The 'Example' section shows 'Positive: 123,456,789.00' and 'Negative: -123,456,789.00'. The settings are as follows:

Setting	Value
Decimal symbol:	.
No. of digits after decimal:	2
Digit grouping symbol:	,
Digit grouping:	123,456,789
Negative sign symbol:	-
Negative number format:	-1.1
Display leading zeros:	0.7
List separator:	,
Measurement system:	Metric
Standard digits:	0123456789
Use native digits:	Never

At the bottom, there is a 'Reset' button and a note: 'Click Reset to restore the system default settings for numbers, currency, time, and date.' The 'OK', 'Cancel', and 'Apply' buttons are at the very bottom.

Should be a point
(not a comma)

Should be a comma
(not a semi-colon)



Software direct Link: http://www.engsolinc.com/software/tanita/HealthyEdgeLite_V2_13_3.zip